

**Diversified
Development
Group**

**Visalia, CA
(559)-225-6363**

HIGHWAY 99

HIGHWAY 198

PLAZA DRIVE

HURLEY AVENUE

KELSEY DRIVE



DDG-122V
DDG-172V
DDG-103V
DDG-233V
DDG-149V
DDG-40V
DDG-550V

PLAZA DRIVE INDUSTRIAL PARK

American Street

Plaza Drive

Riggin
150

Riggin Avenue

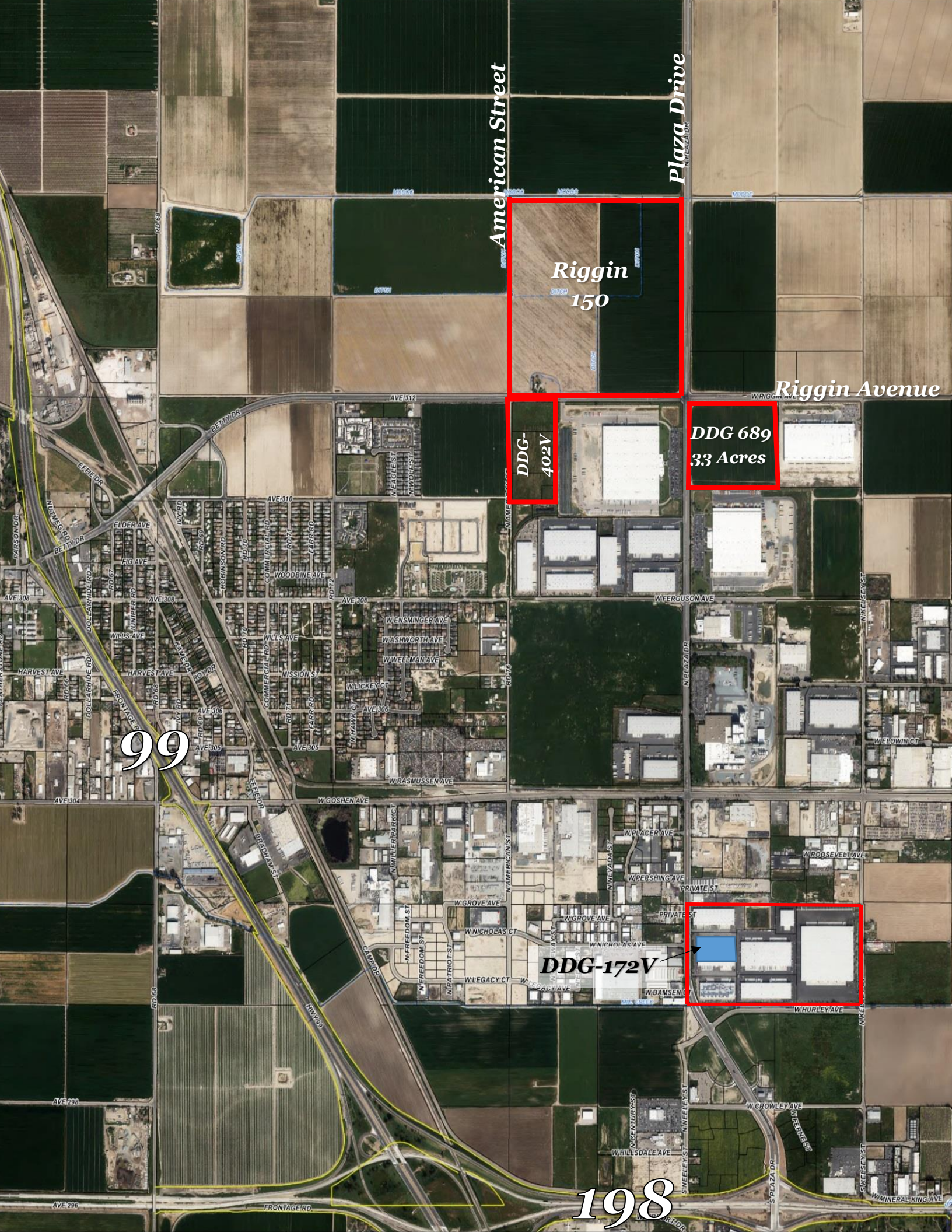
DDG-402V

DDG 689
33 Acres

99

DDG-172V

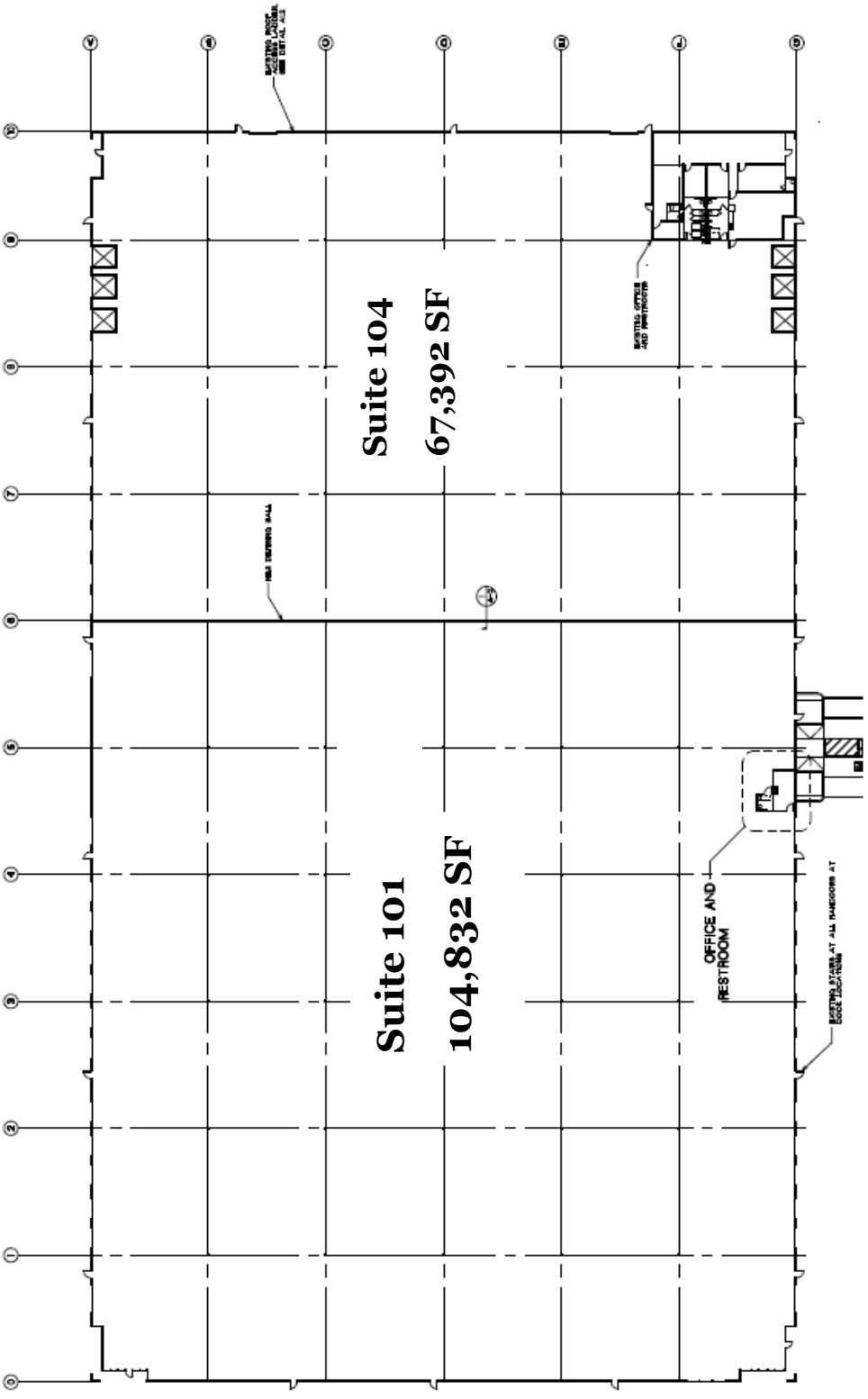
198



REVISIONS	
△	REVISION NO. DATE
△	
△	
△	
△	
△	
△	



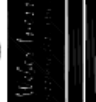
STATE OF CALIFORNIA
 PROFESSIONAL ENGINEER
 No. 10000
 EXPIRES 12/31/10
A-2
 OF 10 SHEETS



OVERALL FLOOR PLAN

MARK	DATE
△	02/14/08

DDG 172 T.I.
800 PLAZA DRIVE



6730 N. West, Suite #111
Pasadena, CA 91711
PH: 559-278-0000
DATE: 01-17-08
JOB NO.:

A 3

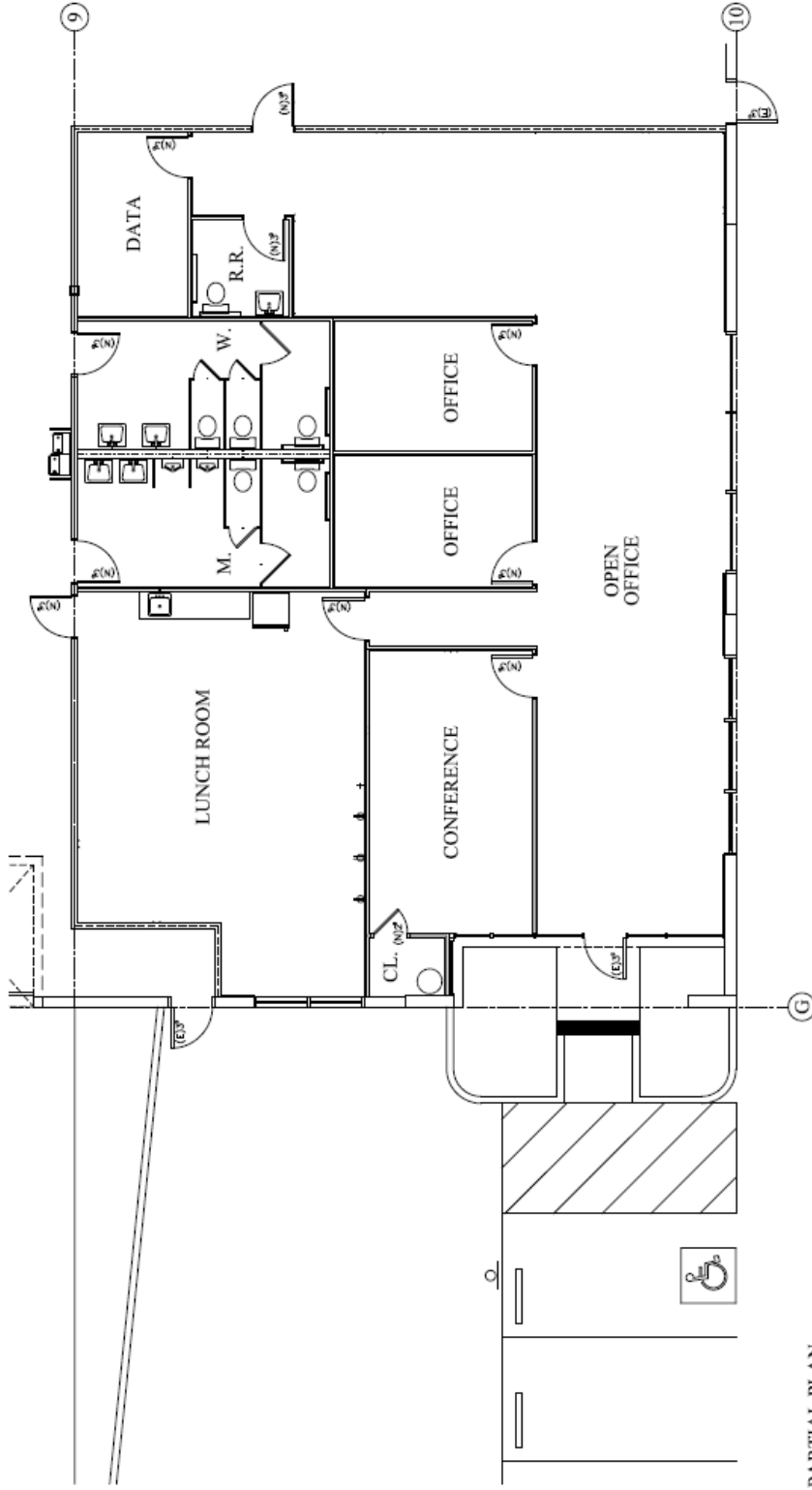
OF - SHEETS

Suite 104

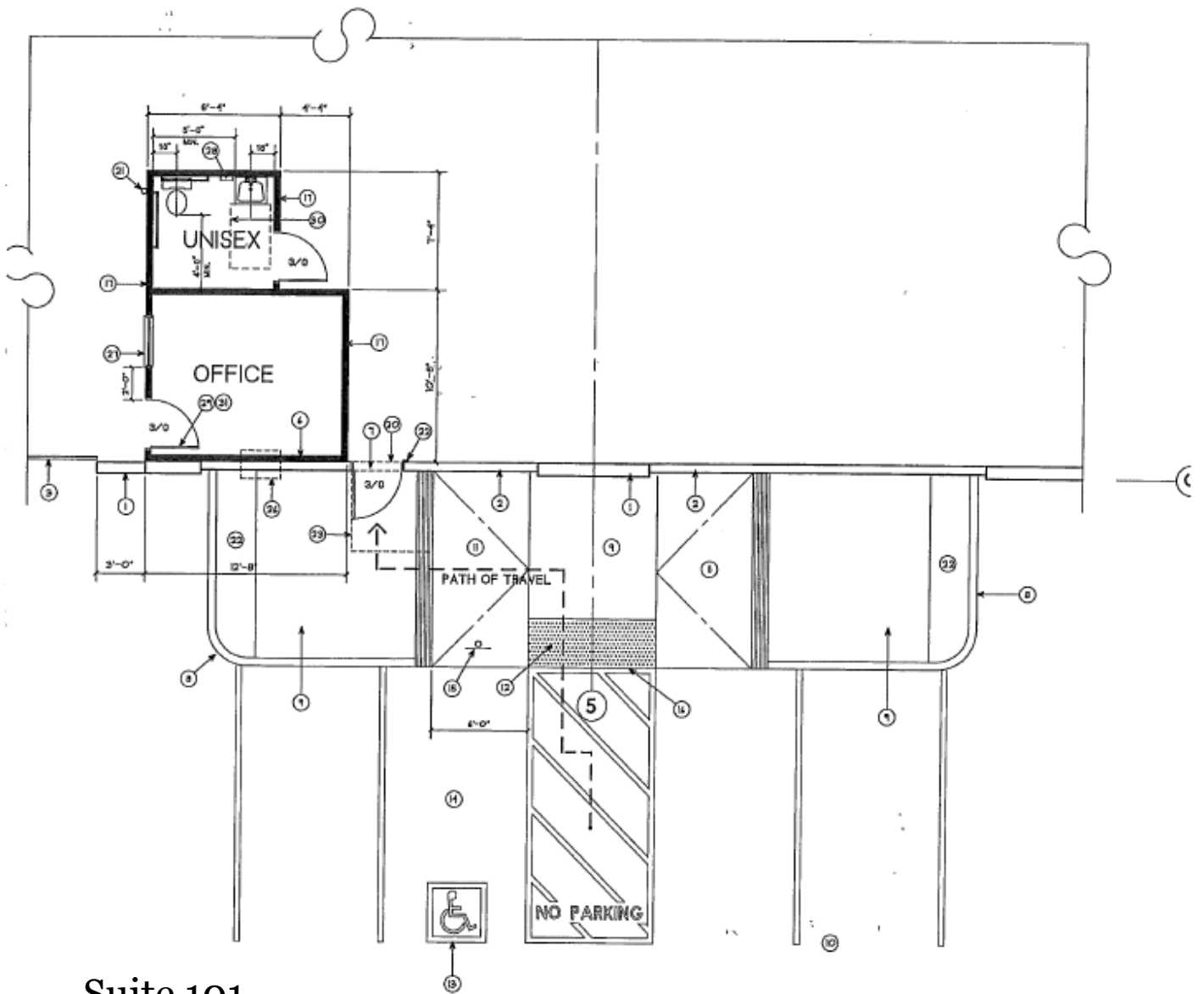


PARTIAL FLOOR PLAN

SCALE: 1/4" = 1'-0"



PARTIAL PLAN



Suite 101

NEW OFFICE & RESTROOM 197 SQ.FT.

SCALE 1/4" = 1'-0"



DDG 172V

SPECIFICATIONS

ADDRESS:	800 Plaza Drive Visalia, CA 93291
BUILDING SF:	172,224 square feet
DIVISIBLE SF:	Suite 101: 104,832 SF Suite 104: 67,392 SF
ZONING:	IL Light Industrial
DIMENSIONS:	552' x 312'
COLUMN SPACING:	56' x 52' modules.
BAY SIZE:	56' x 312'
CONCRETE SLAB:	6", laser screed
	CLEAR HEIGHT: 30' minimum clear height.
SKY LIGHTS:	4' x 8' skylights (6) six per bay.
TRUCK COURT:	60', 6" reinforced concrete dock aprons \pm 1% slope.
TRUCK DOCKS DRAINAGE:	All truck docks designed with a gravity drainage system.
CROSS DOCK:	Cross Dock Building (44) 9' x 10' dock high doors and (6) 12' x 14' grade level doors.
DOCK EQUIPMENT:	Six (6) mechanical dock levelers and weld on edge of dock plates
ELECTRICAL:	2,000 amp 277/480v 3P4W Main service to Building.
FIRE SPRINKLER SYSTEM:	ESFR Fire Sprinkler system with 125 hp booster pump.
OFFICE:	Existing 2,998 SF Office on the southeast corner and one office and one restroom in the south center of Building

For further information, please contact

Marcus Pignotti

(559) 225-6363, Ext. 8